

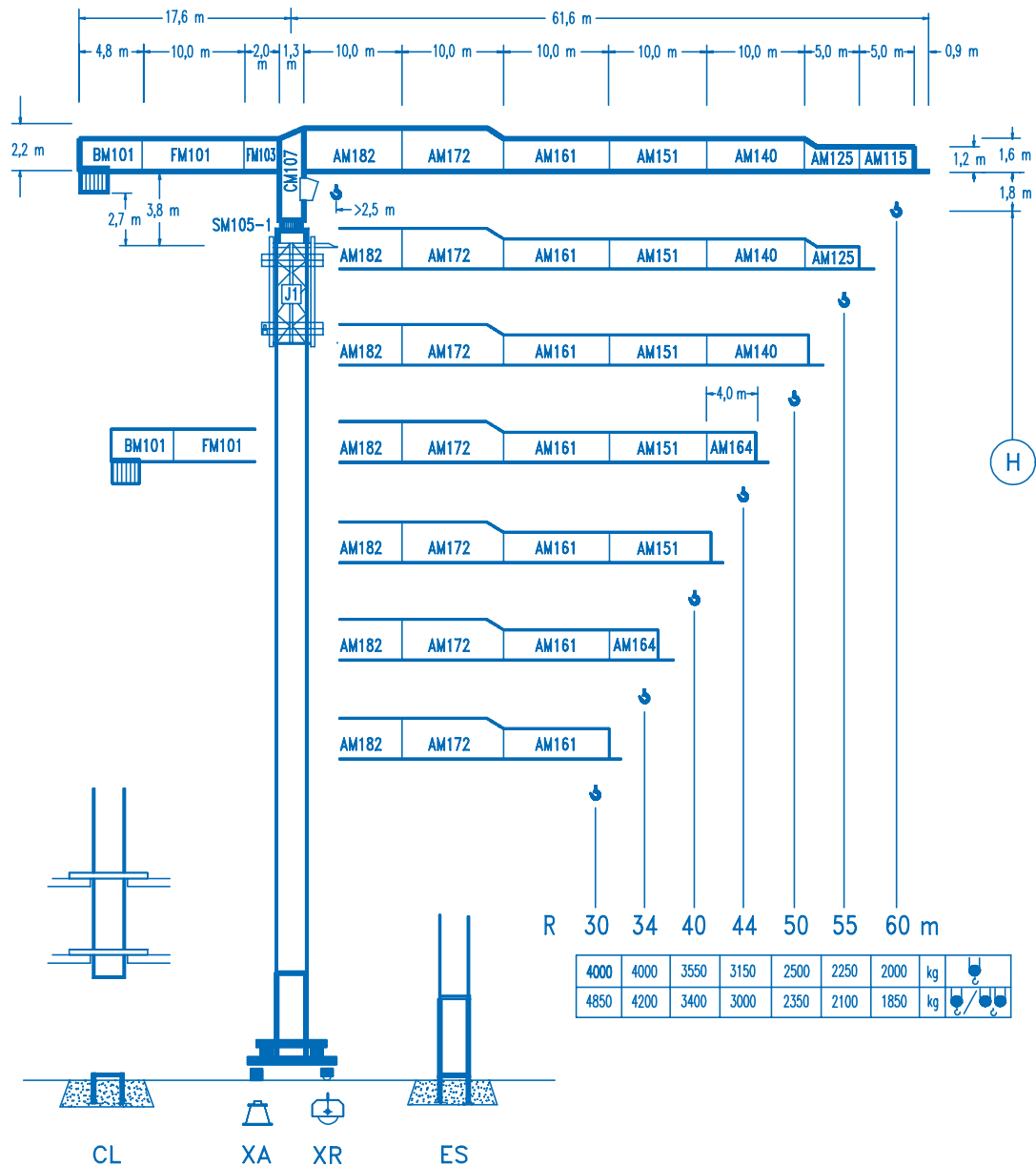


COMANSA

LINDEN 1000

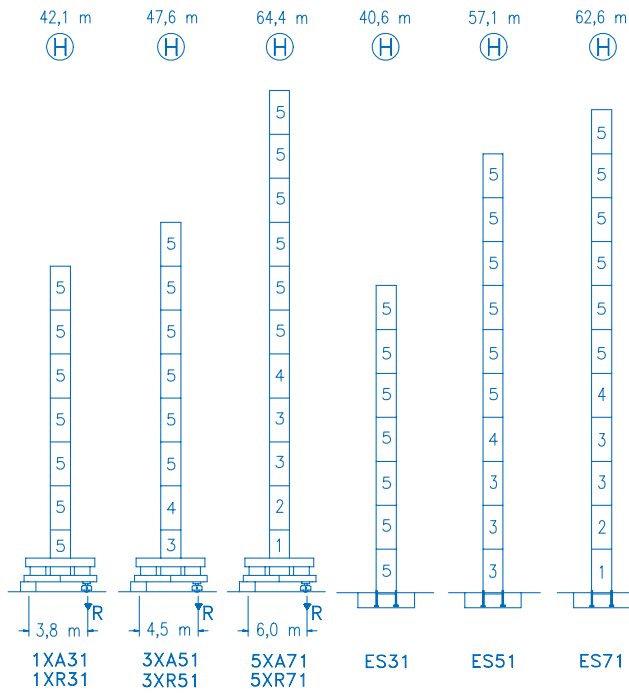
10 LC 140

8 t

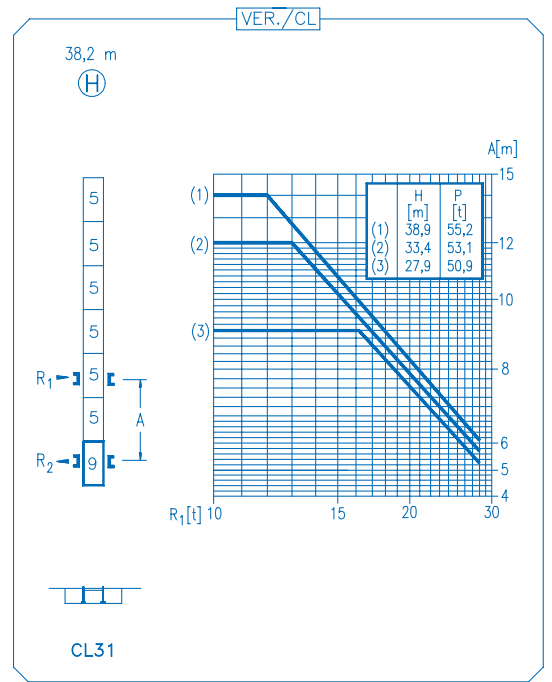


CE
DIN 15018 H1 B3

R	R(Cmax)	Cmax	25	30	34	40	44	50	55	60	m
60	33,1 m 17,5 m	4000 8000	4000 5365	4000 4350	3885 3775	3230 3095	2895 2750	2490 2345	2225 2075	2000 1850	☐
55	33,5 m 17,7 m	4000 8000	4000 5420	4000 4395	3930 3795	3270 3125	2930 2785	2520 2375	2250 2100		
50	33,2 m 17,5 m	4000 8000	4000 5375	4000 4355	3900 3765	3240 3100	2905 2760	2500 2350			
44	35,6 m 18,8 m	4000 8000	4000 5805	4000 4715	4000 4080	3515 3365	3150 3000				
40	36,0 m 18,9 m	4000 8000	4000 5860	4000 4760	4000 4120	3550 3400					
34	34,0 m 19,2 m	4000 8000	4000 5970	4000 4850	4000 4200						
30	30,0 m 19,2 m	4000 8000	4000 5970	4000 4850							



N	Ref.	h
1	S15	5,5 m
2	TS15	5,5 m
3	S14	5,5 m
4	TS14	5,5 m
5	S13	5,5 m
9	CLS13.1	3,1 m



R. máx.	En servicio	1XR31 74,0 t
	In operation	3XR51 71,9 t
	En service	5XR71 82,4 t
	In Betrieb	

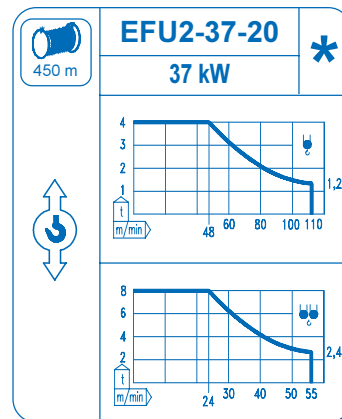
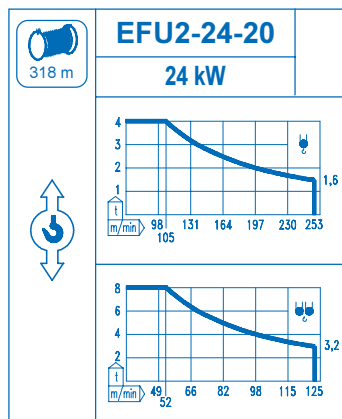
R. máx.	Fuera de servicio	1XR31 81,7 t
	Out of service	3XR51 89,4 t
	Hors service	5XR71 125,4 t
	Ausser Betrieb	

CFU-4.0
4 kW
0 ⇄ 66 m/min

GR-7.5
2 x 75 Nm
0 ⇄ 0,7 rpm

TS2-5.5 | **TRA-7.5**
2 x 55 Nm | 2 x 75 Nm
0 ⇄ 20 m/min
1XR31 | 3XR51 | 5XR 71

TRA-7.5VC
2 x 75 Nm
0 ⇄ 20 m/min
5XR71



Tensión de alimentación	400 V
Operating voltage	3 ph
Tension de service	50 Hz
Betriebsspannung	

Opcional	*
Optional	
En option	
Kaufoption	

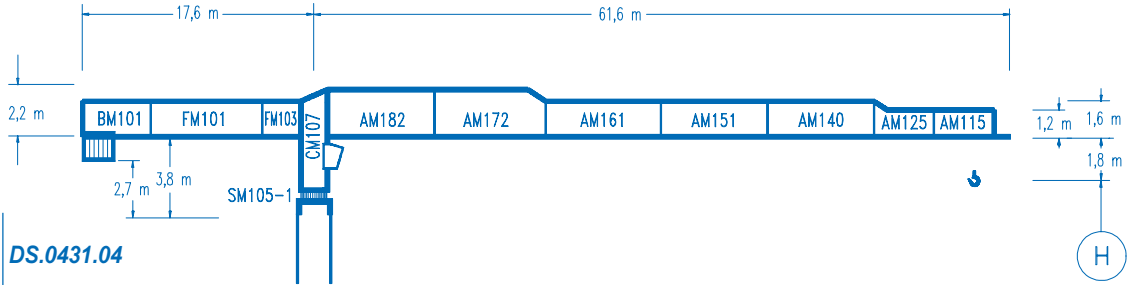


COMANSA

LINDEN 1000

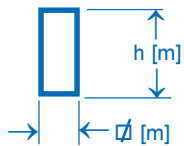
10 LC 140

2,0 m

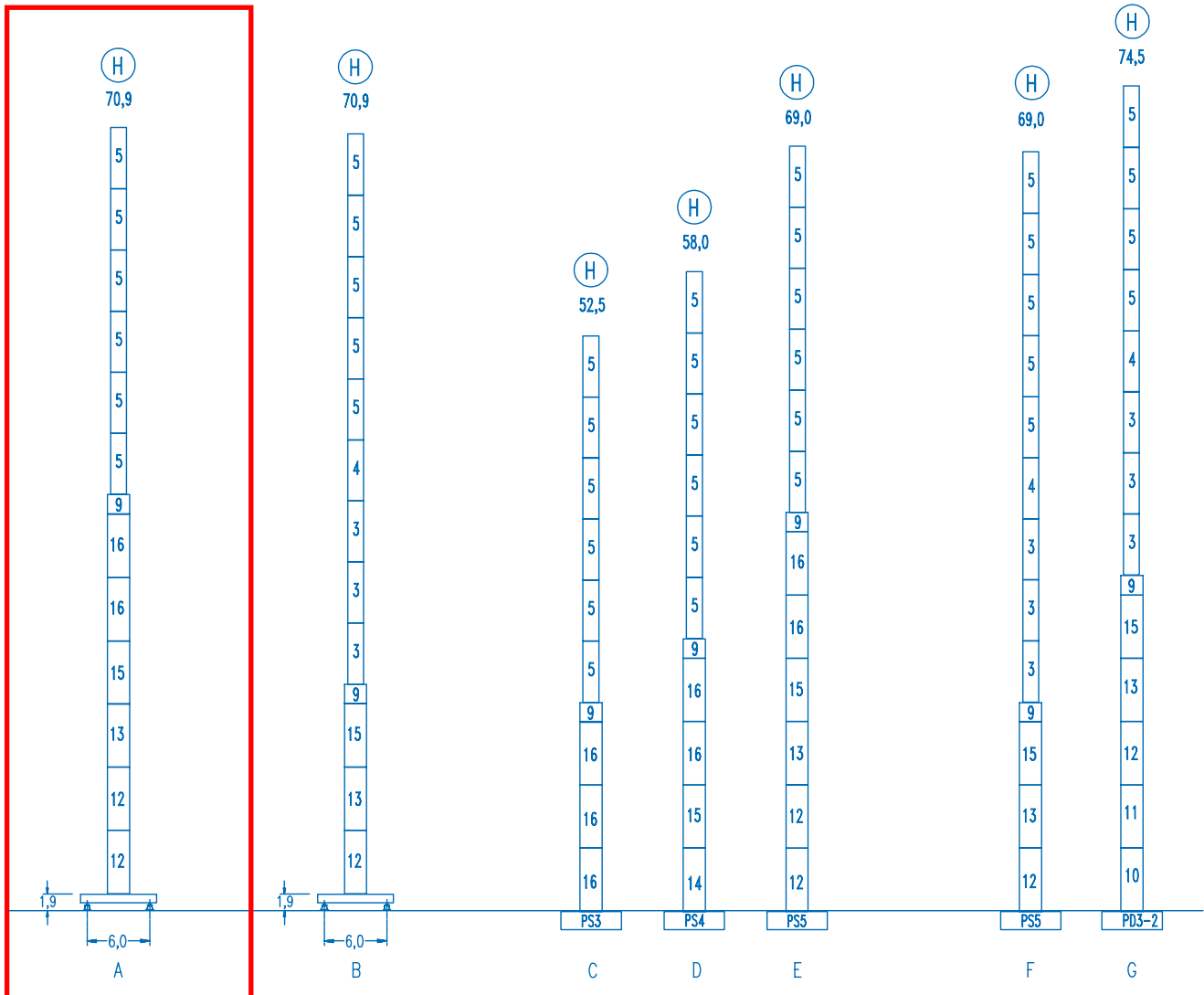


Configuraciones ver
Configuration see
Configurations voyez
Komponenten siehe

DS.0431.04



n°	Ref.	Ø	h	n°	Ref.	Ø	h	n°	Ref.	Ø	h	n°	Ref.	Ø	h
3	S14	1,6	5,5	9	TMS23	2,0	1,0	12	S25	2,0	5,5	15	TS24	2,0	5,5
4	TS14	1,6	5,5	10	D23	2,0	5,5	13	TS25	2,0	5,5	16	S23	2,0	5,5
5	S13	1,6	5,5	11	TD23A	2,0	5,5	14	S24	2,0	5,5				



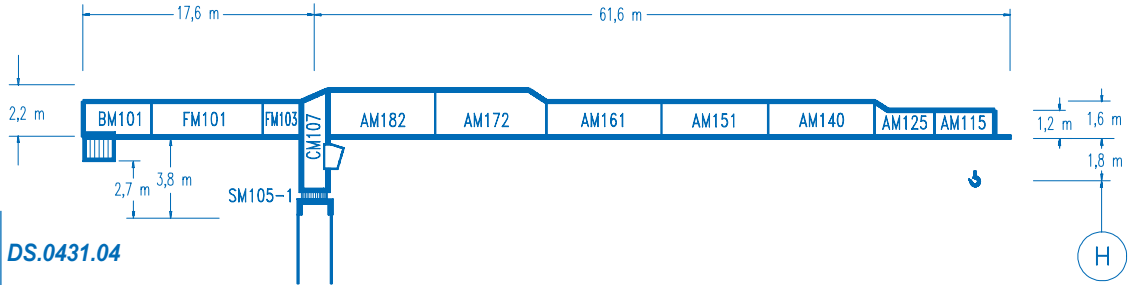


COMANSA

LINDEN 1000

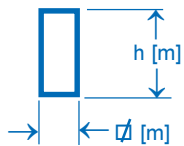
10 LC 140

2,5 m

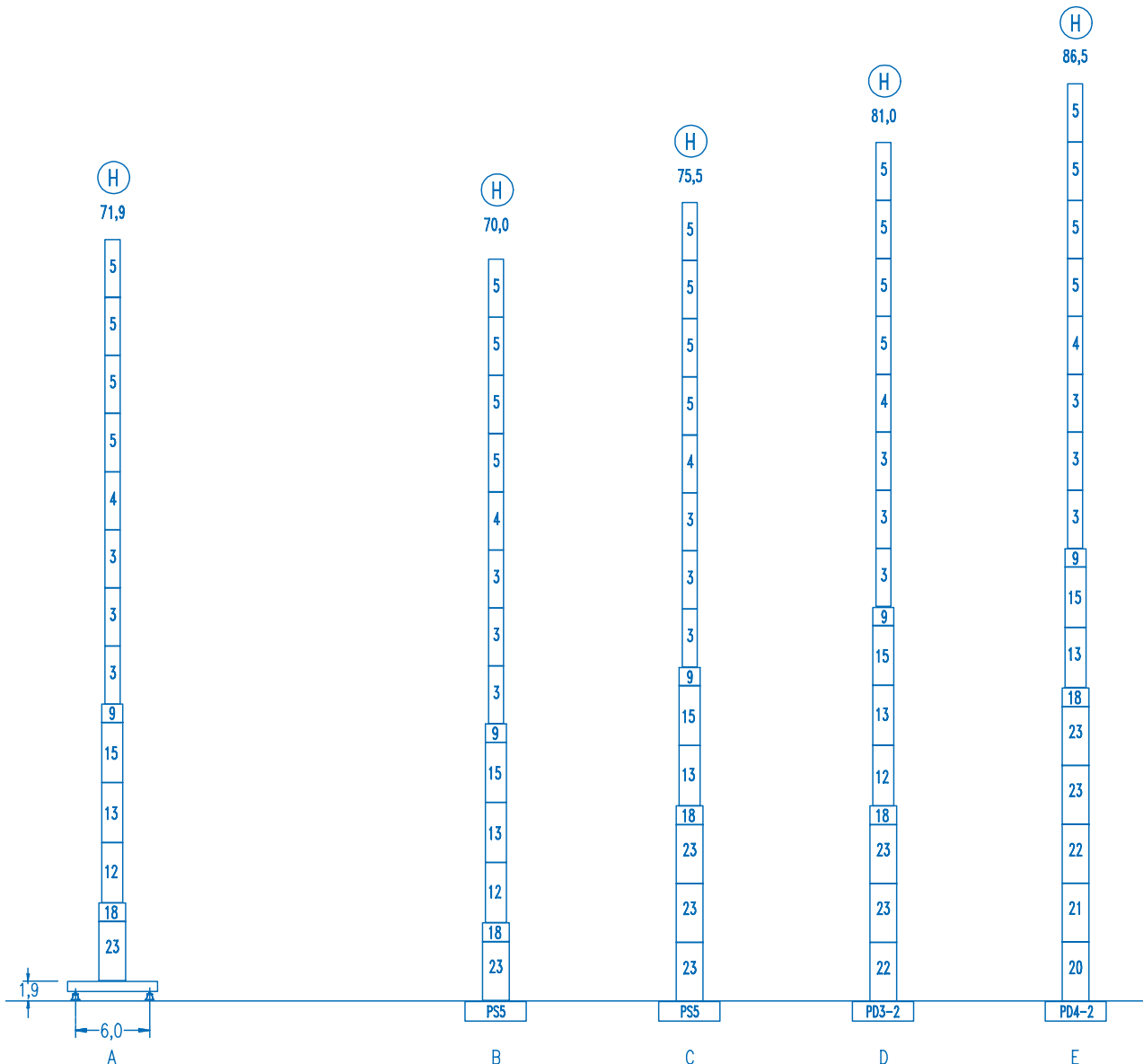


Configuraciones ver
Configuration see
Configurations voyez
Komponenten siehe

DS.0431.04



n°	Ref.	∅	h	n°	Ref.	∅	h	n°	Ref.	∅	h	n°	Ref.	∅	h
3	S14	1,6	5,5	9	TMS23	2,0	1,0	14	S24	2,0	5,5	20	TD34	2,5	5,5
4	TS14	1,6	5,5	12	S25	2,0	5,5	15	TS24	2,0	5,5	21	D33	2,5	5,5
5	S13	1,6	5,5	13	TS25	2,0	5,5	18	TMS35	2,5	1,0	22	TD33A	2,5	5,5
												23	S35	2,5	5,5



DS.0432.08

09/04

Reserva de modificaciones.- Subject to modifications.- Modifications réservées.- Konstruktionsänderungen vorbehalten.