

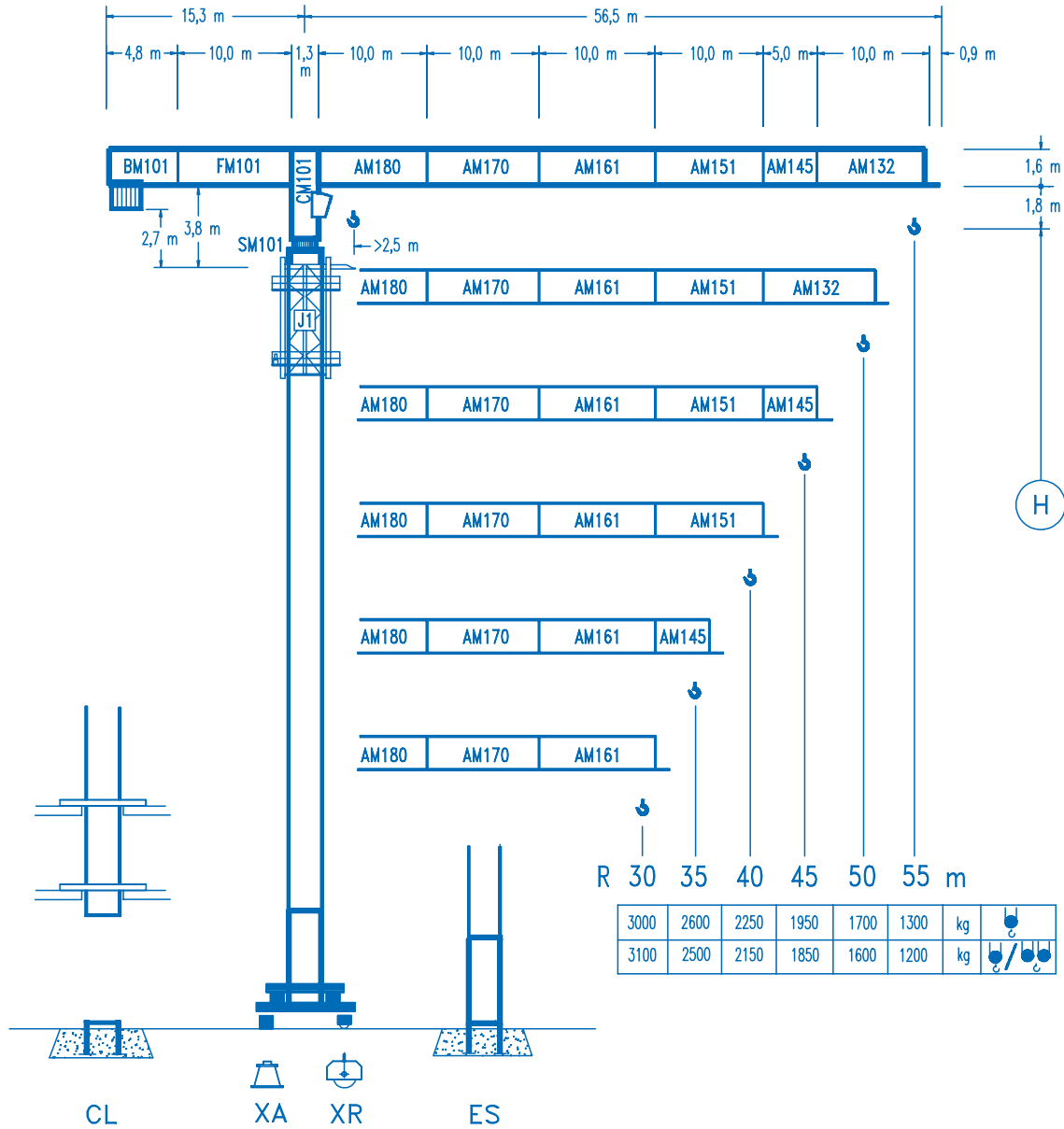


COMANSA

LINDEN 1000

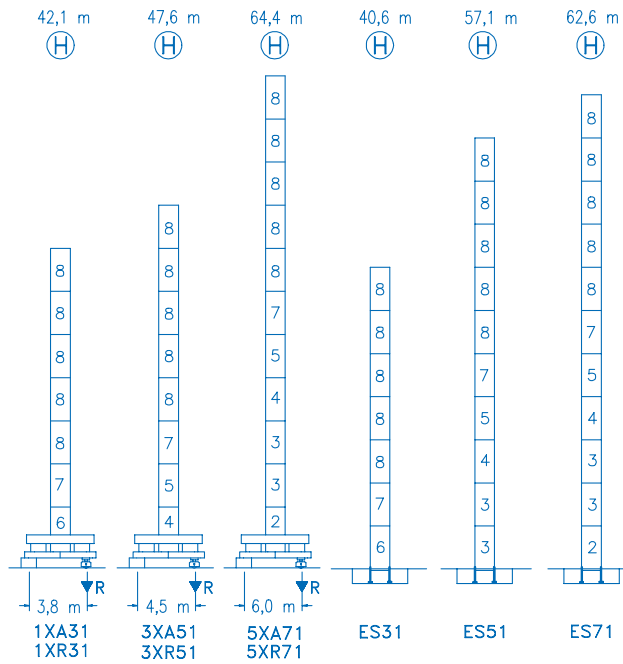
10 LC 90

6 t

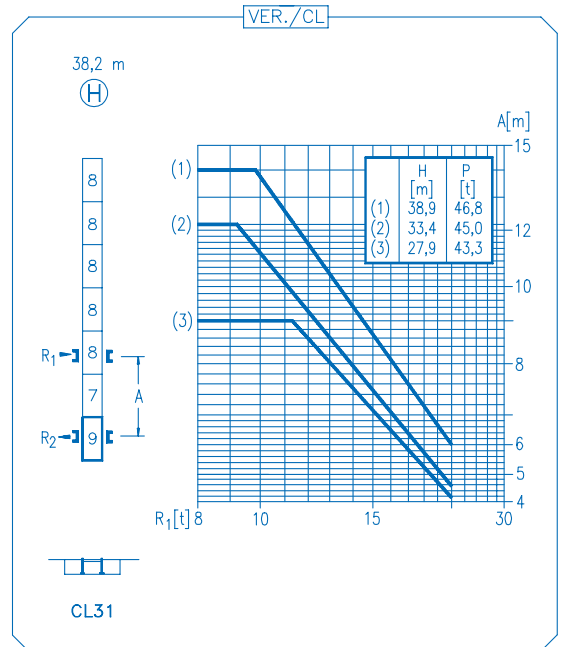


CE
DIN 15018 H1 B3

R		R _(Cmax)	C _{max}	25	30	35	40	45	50	55	
55		26,7 m	3000	3000	2630	2210	1895	1650	1460	1300	
		14,0 m	6000	3120	2530	2110	1795	1550	1360	1200	
50		30,3 m	3000	3000	3000	2555	2200	1920	1700		
		15,9 m	6000	3610	2935	2455	2100	1820	1600		
45		30,7 m	3000	3000	3000	2590	2230	1950			
		16,1 m	6000	3665	2980	2490	2130	1850			
40		31,0 m	3000	3000	3000	2615	2250				
		16,2 m	6000	3695	3005	2515	2150				
35		30,8 m	3000	3000	3000	2600					
		16,1 m	6000	3675	2985	2500					
30		30,0 m	3000	3000	3000						
		16,6 m	6000	3810	3100						



N	Ref.	h
2	TS15	5,5 m
3	S14	5,5 m
4	TS14	5,5 m
5	S13	5,5 m
6	S12	5,5 m
7	TS12	5,5 m
8	S11	5,5 m
9	CLS13.1	3,1 m



R. máx.	En servicio	1XR31 52,6 t 3XR51 53,7 t 5XR71 66,4 t
	In operation	
	En service	
	In Betrieb	

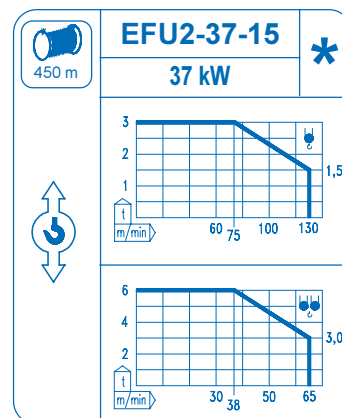
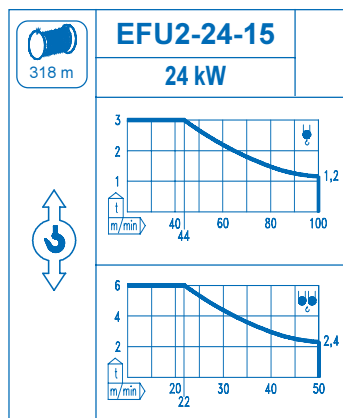
R. máx.	Fuera de servicio	1XR31 74,2 t 3XR51 80,9 t 5XR71 110,9 t
	Out of service	
	Hors service	
	Ausser Betrieb	

CFU-4.0
4 kW
0 ⇄ 66 m/min

GR-12
120 Nm
0 ⇄ 0,7 rpm

TS2-5.5 **TRA-7.5**
2 x 55 Nm 2 x 75 Nm
0 ⇄ 20 m/min
1XR31 3XR51 5XR71

TRA-7.5VC
2 x 75 Nm
0 ⇄ 20 m/min
5XR71



Tensión de alimentación	400 V
Operating voltage	3 ph
Tension de service	50 Hz
Betriebsspannung	

Opcional Optional En option Kaufoption	*
---	---

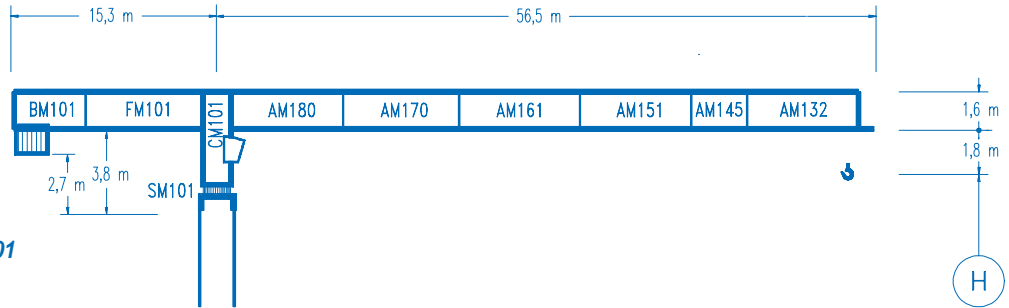


COMANSA

LINDEN 1000

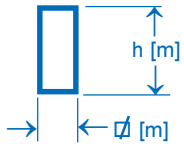
10 LC 90

∅2,0 m

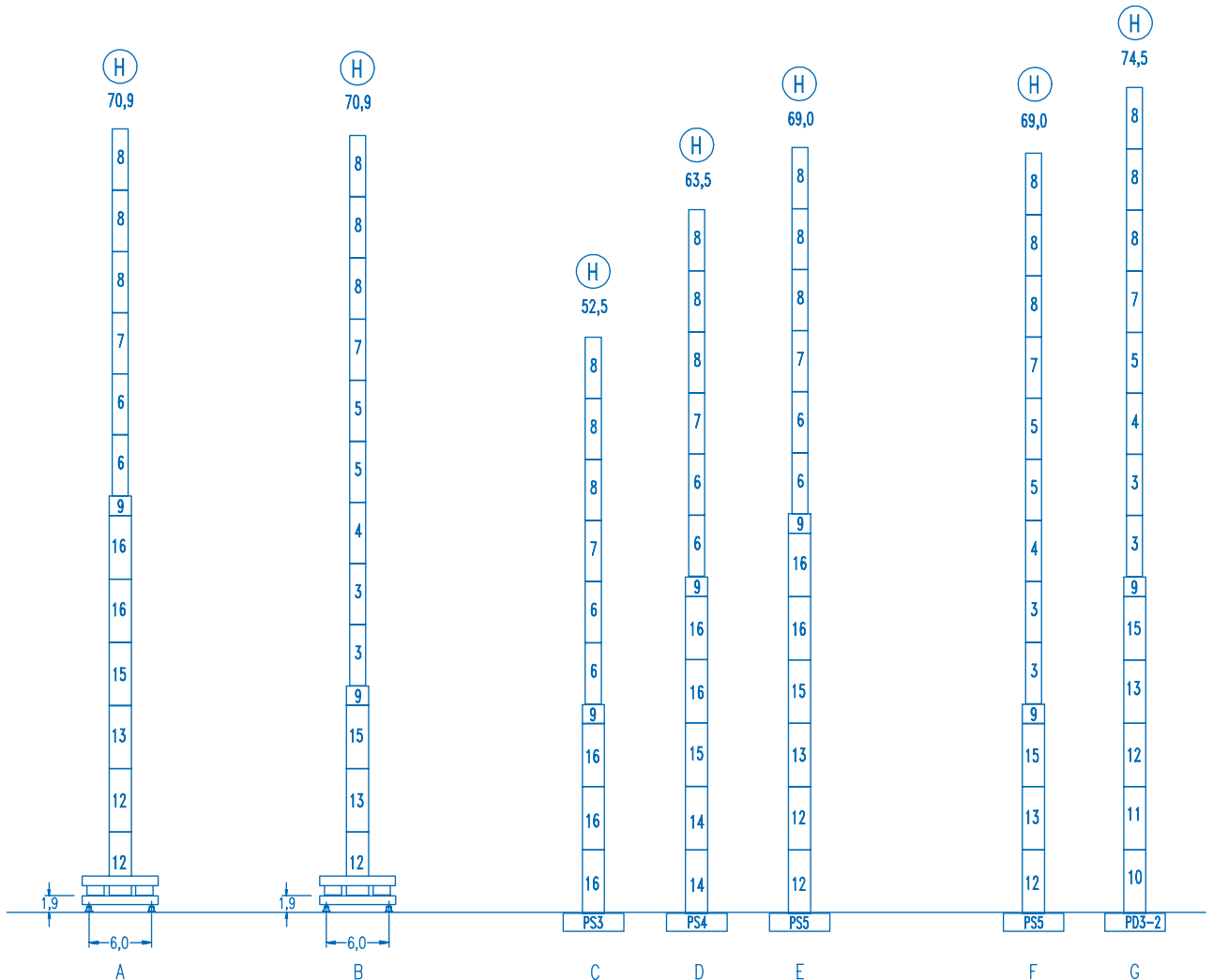


Configuraciones ver
Configuration see
Configurations voyez
Komponenten siehe

DS.0431.01



n°	Ref.	∅	h	n°	Ref.	∅	h	n°	Ref.	∅	h	n°	Ref.	∅	h
3	S14	1,6	5,5	6	S12	1,6	5,5	9	TMS23	2,0	1,0	13	TS25	2,0	5,5
4	TS14	1,6	5,5	7	TS12	1,6	5,5	10	D23	2,0	5,5	14	S24	2,0	5,5
5	S13	1,6	5,5	8	S11	1,6	5,5	11	TD23A	2,0	5,5	15	TS24	2,0	5,5
								12	S25	2,0	5,5	16	S23	2,0	5,5



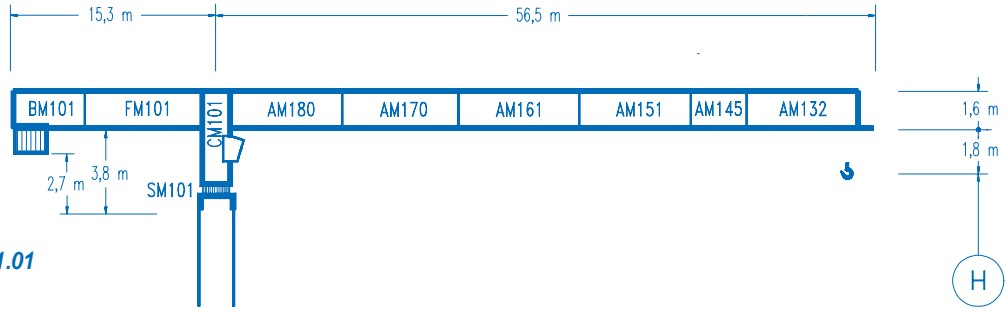


COMANSA

LINDEN 1000

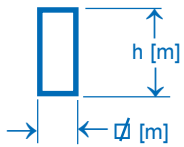
10 LC 90

2,5 m



Configuraciones ver
Configuration see
Configurations voyez
Komponenten siehe

DS.0431.01



n°	Ref.	∅	h	n°	Ref.	∅	h	n°	Ref.	∅	h	n°	Ref.	∅	h
3	S14	1,6	5,5	7	TS12	1,6	5,5	13	TS25	2,0	5,5	20	TD34	2,5	5,5
4	TS14	1,6	5,5	8	S11	1,6	5,5	14	S24	2,0	5,5	21	D33	2,5	5,5
5	S13	1,6	5,5	9	TMS23	2,0	1,0	15	TS24	2,0	5,5	22	TD33A	2,5	5,5
6	S12	1,6	5,5	12	S25	2,0	5,5	18	TMS35	2,5	1,0	23	S35	2,5	5,5

