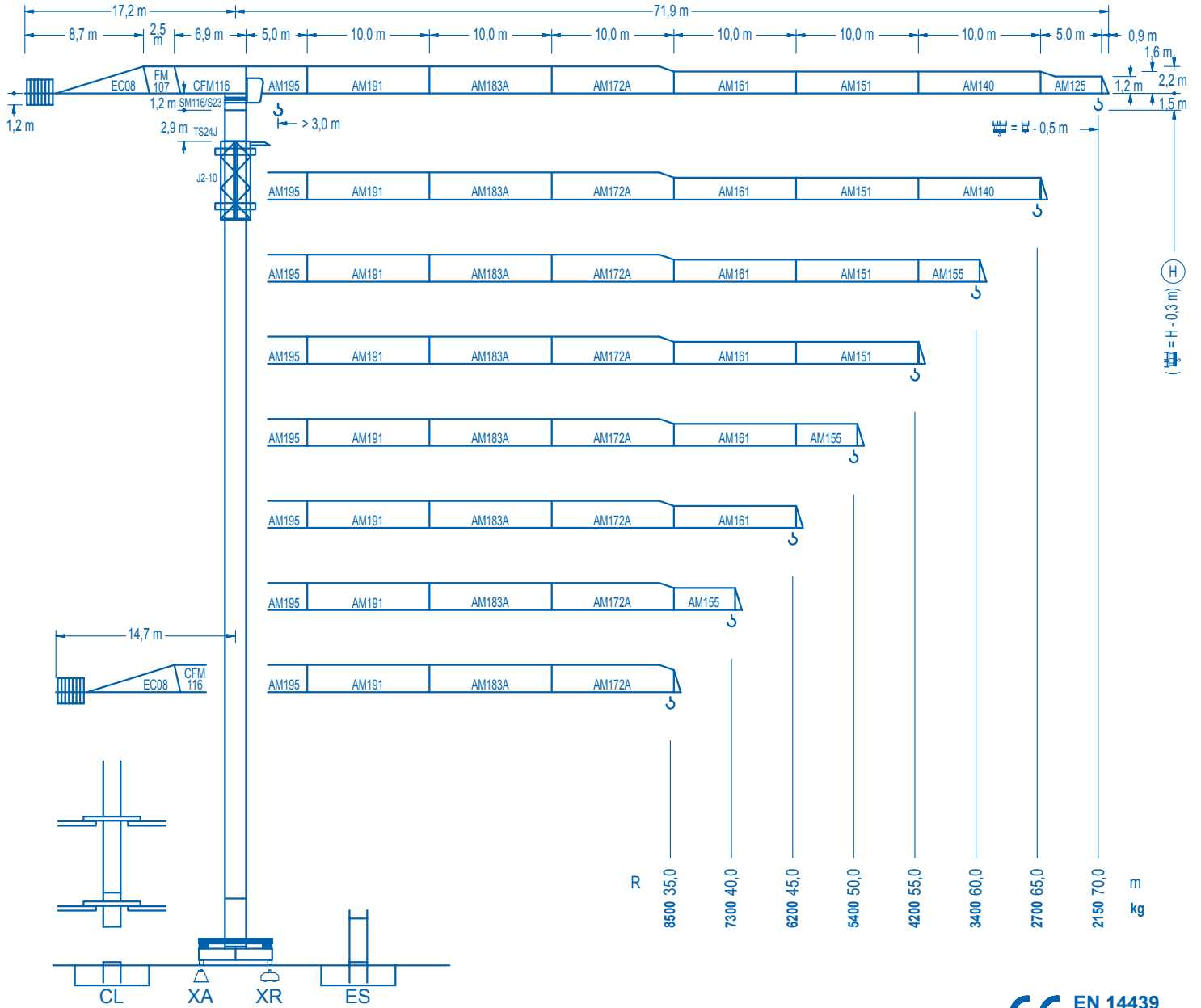


LC 1600

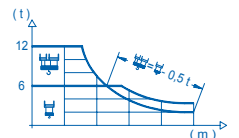
16 LC 260

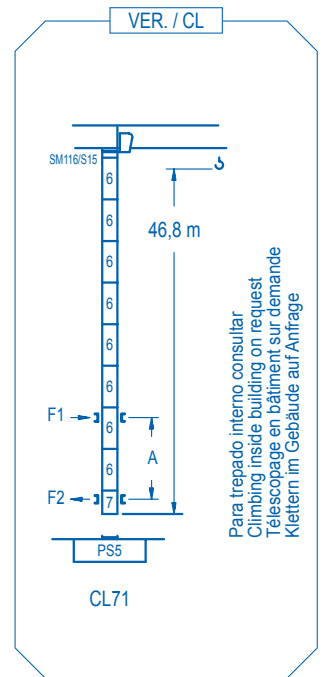
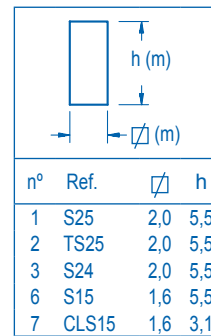
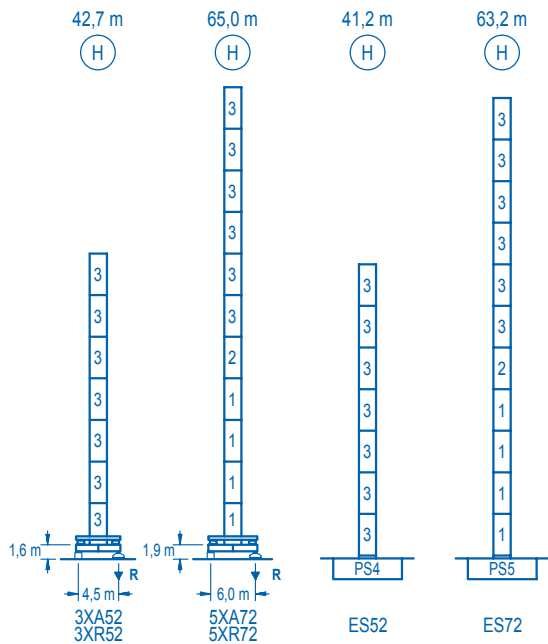
12 t



CE EN 14439 (C/25)

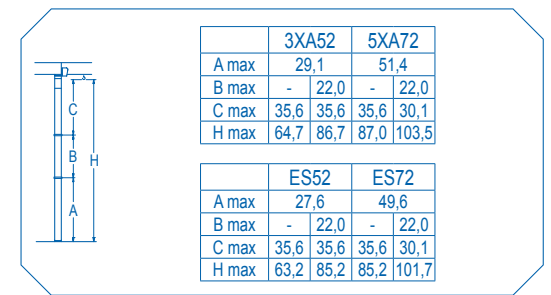
R (m)	15,1	20	22	26	27,2	29,0	32	35	37	40	42	45	47	50	52	55	57	60	62	65	67	70	Unit
70	12000	8650	7730	6330	6000	6000	5370	4860	4560	4170	3940	3640	3460	3220	3080	2880	2760	2600	2500	2360	2270	2150	kg
65	16,7	20	22	26	28	30,2	32,4	35	37	40	42	45	47	50	52	55	57	60	62	65			m
60	18,6	20	22	26	28	30	33,7	36,3	37	40	42	45	47	50	52	55	57	60					m
55	20,4	22	26	28	30	32	35	37,0	40,0	42	45	47	50	52	55								m
50	23,1	26	28	30	32	35	37	40	41,9	45,5	47	50											m
45	25,1	28	30	32	35	37	40	42	45,0														m
40	25,6	28	30	32	35	37	40,0																m
35	25,5	28	30	32	35,0																		m





R. máx.	En servicio In operation En service In Betrieb	3XR52..... 103 t 5XR72..... 101 t	R. máx.	Fuera de servicio Out of service Hors service Ausser Betrieb	3XR52..... 72 t 5XR72..... 132 t
----------------	---	--------------------------------------	----------------	---	-------------------------------------

Para otras zonas de viento o alturas superiores consultar
For other wind zones or additional hook heights on request
Pour d'autres zones de vent ou des hauteurs supplémentaires sur demande
Für andere Windzonen oder weiteren Hakenhöhen auf Anfrage



CFU-7.5
7,5 kW
0 ⇄ 94 m/min

GFU-7.5
2 x 7,5 kW
0 ⇄ 0,7 rpm

TRA-7.5
2 x 75 Nm
0 ⇄ 20 m/min
3XR52 | 5XR72

TRA-7.5VC *
2 x 75 Nm
0 ⇄ 20 m/min
5XR72

EFU3-37-30
37 kW
480 m
t ↑
m/min →

EFU5-50-30 *
50 kW
800 m
t ↑
m/min →

EFU6-65-30 *
65 kW
800 m
t ↑
m/min →

Tensión de alimentación Operating voltage Tension de service Betriebsspannung	400 V 3 ph 50 Hz
--	------------------------

Opcional Optional En option Kaufoption	*
---	---