

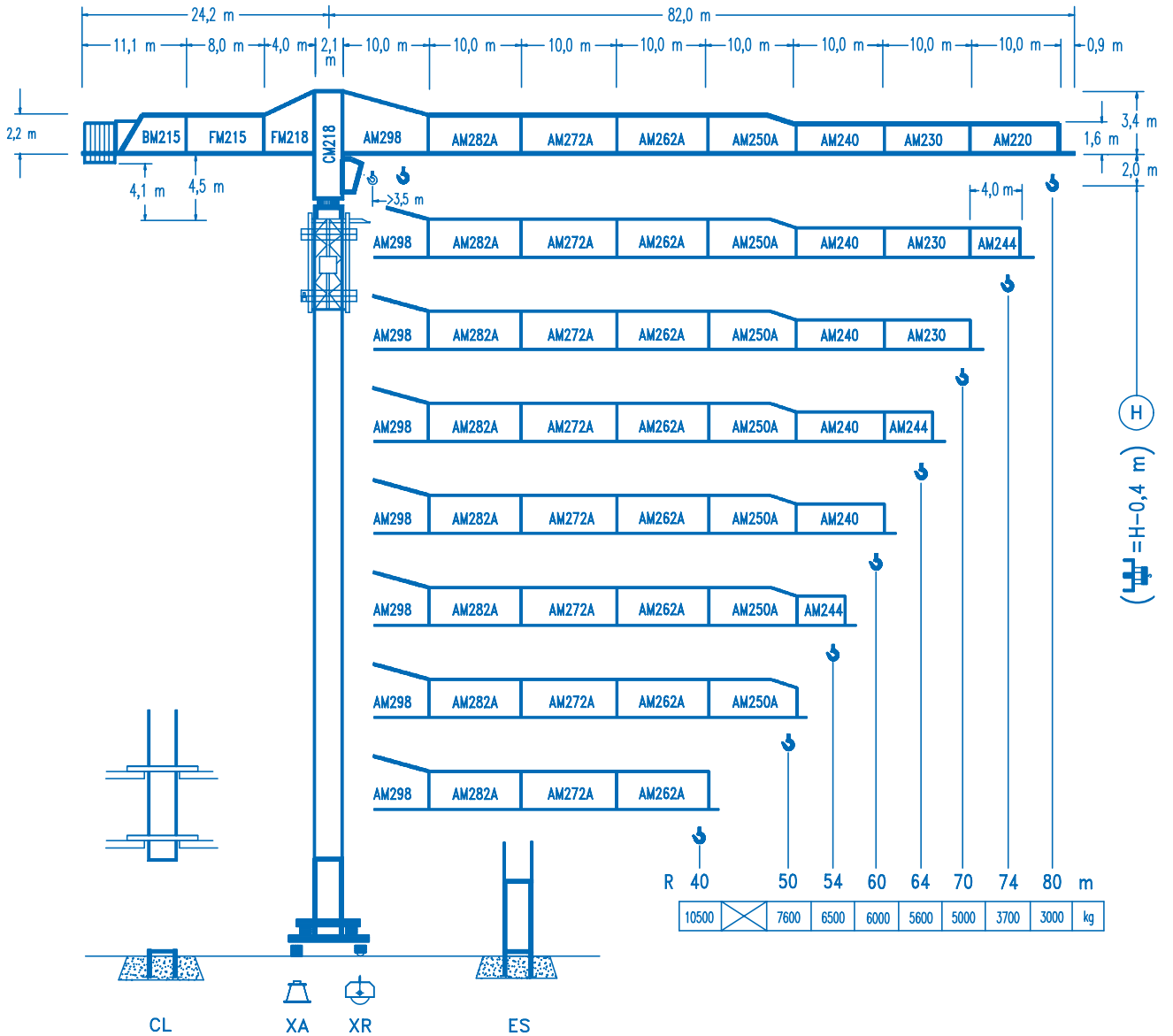


COMANSA

LINDEN 2100

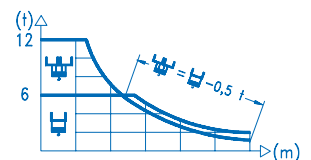
21 LC 400

12 t



CE
DIN 15018 H1 B3

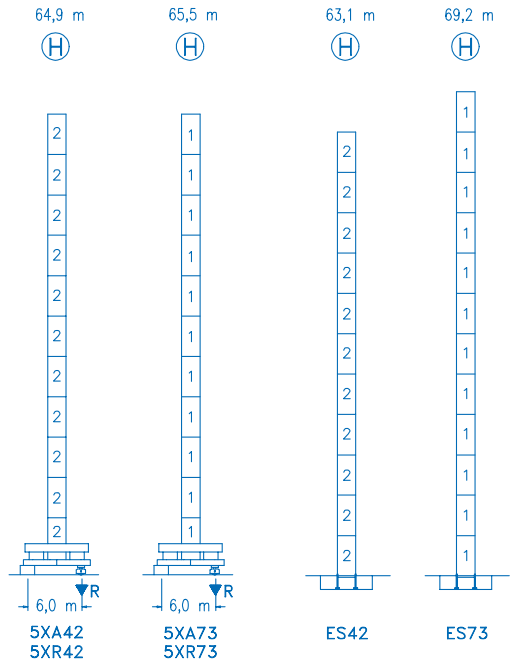
R	H						H								
80	23,6	25	30	34	37	42,0	43,9	50	54	60	64	70	74	80	m
	12000	11215	9045	7785	7025	6000	6000	5185	4750	4210	3905	3515	3295	3000	kg
74		25,7	30	34	37	40	45,4	48,4	54	60	64	70	74	m	
		12000	10000	8620	7790	7085	6000	6000	5310	4710	4375	3945	3700	kg	
70			31,0	34	37	40	44	50	54,4	59,5	64	70	m		
			12000	10765	9755	8900	7945	6810	6000	6000	5530	5000	kg		
64			31,1	34	37	40	44	50	55,7	60,0	64	m			
			12000	10835	9820	8960	8000	6855	6000	6000	5600	kg			
60			32,2	34	37	40	44	50	57,8	60,0	m				
			12000	11265	10215	6330	8340	7155	6000	6000	kg				
54			31,7	34	37	40	44	50	54	m					
			12000	11085	10050	9175	8200	7035	6500	kg					
50			33,4	34	37	40	44	50	m						
			12000	11750	10660	9740	8710	7600	kg						
40				35,0	37	40	m								
				12000	11270	10500	kg								



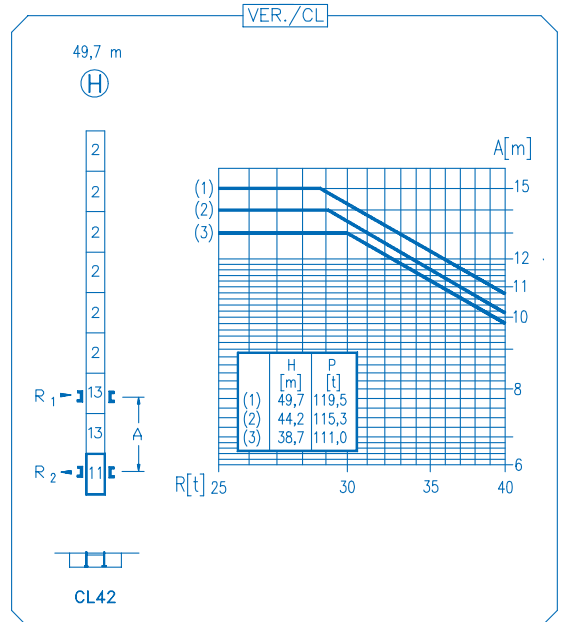
DS.0346.29

09/05

Reserva de modificaciones.- Subject to modifications.- Modifications réservées.- Konstruktionsänderungen vorbehalten.



N Ref.	∅	h
1	S35	2,5 5,5
2	D23	2,0 5,5
13	D23A	2,0 5,5
11	CLD23A	2,0 3,1



R. máx.	En servicio In operation	5XR42 133,4 t
	En service In Betrieb	5XR73 137,9 t

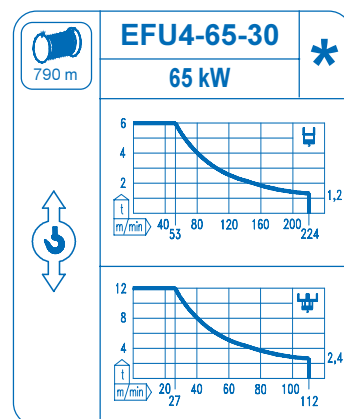
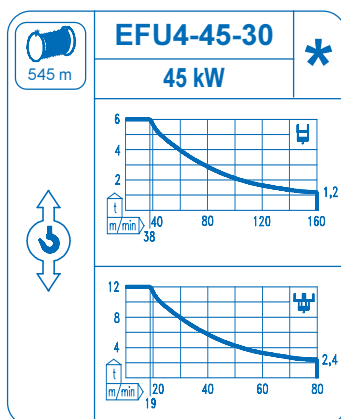
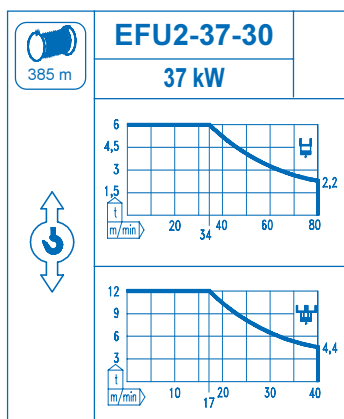
R. máx.	Fuera de servicio Out of service	5XR42 112,2 t
	Hors service Ausser Betrieb	5XR73 130,9 t

CFU-7.5
7,5 kW
0 ↻ 94 m/min

GR-12
4 x 120 Nm
0 ↻ 0,7 rpm

TRA-7.5
2 x 75 Nm
0 ↻ 20 m/min

TRA-7.5VC
2 x 75 Nm
0 ↻ 20 m/min *



Tensión de alimentación Operating voltage Tension de service Betriebsspannung	400 V 3 ph 50 Hz
--	---------------------------------

Opcional Optional En option Kaufoption	*
---	---