

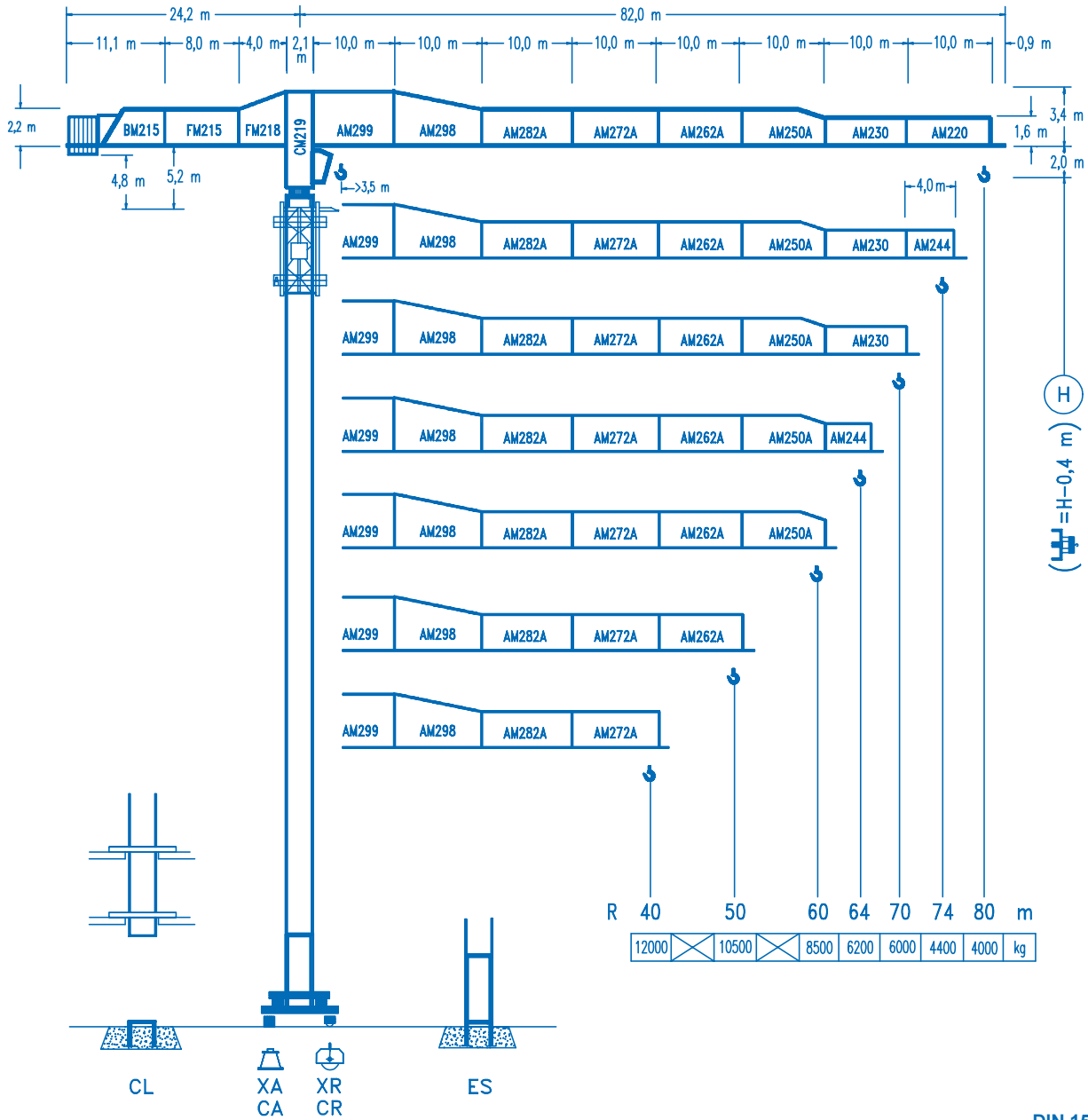


COMANSA

LINDEN 2100

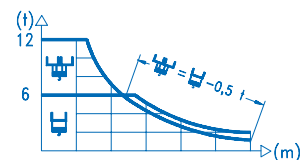
21 LC 550

12 t



CE
DIN 15018 H1 B3

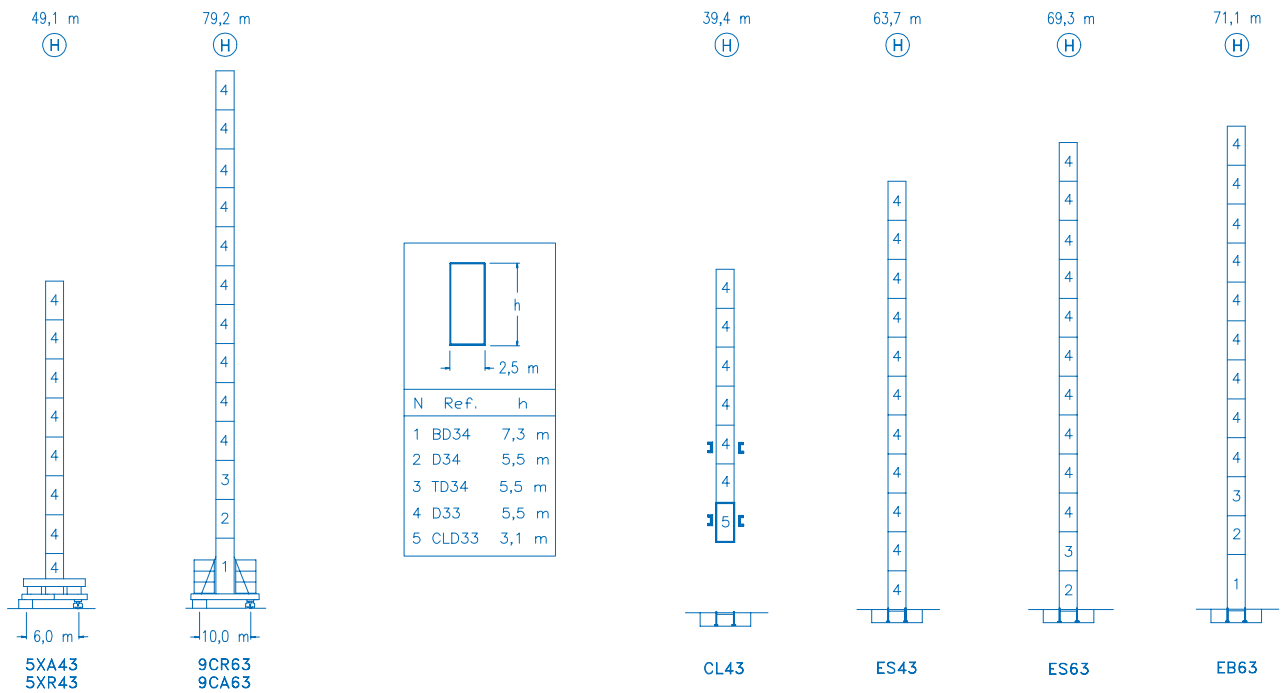
R	⚙️					⚙️						
80	29,5	35	40	45	52,7	55,9	60	64	70	74	80	m
	12000	9825	8390	7285	6000	6000	5550	5160	4660	4375	4000	kg
74	29,4	35	40	45	52,7	56,2	60	64	70	74	m	
	12000	9820	8385	7280	6000	6000	5580	5190	4690	4400	kg	
70		36,6	40	45	50	54	60	65,6	70	m		
		12000	10830	9445	8345	7610	6700	6000	6000	kg		
64		36,3	40	45	50	54	60	64	m			
		12000	10720	9350	8255	7530	6630	6200	kg			
60			44,0	45	50	54	60	m				
			12000	11700	10375	9490	8500	kg				
50			43,9	45	50	m						
			12000	11670	10500	kg						
40			40	m								
			12000	kg								



DS.0346.31

09/05

Reserva de modificaciones.- Subject to modifications.- Modifications réservées.- Konstruktionsänderungen vorbehalten.



R. máx.	En servicio In operation En service In Betrieb	5XR43 150,0 t
		9CR63 111,0 t

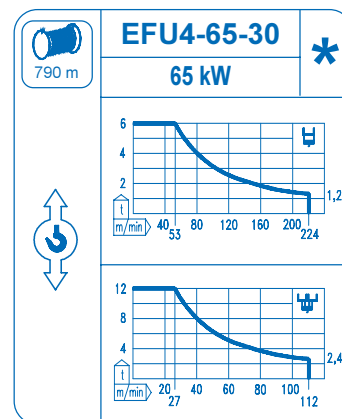
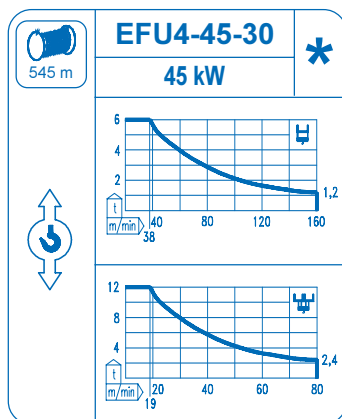
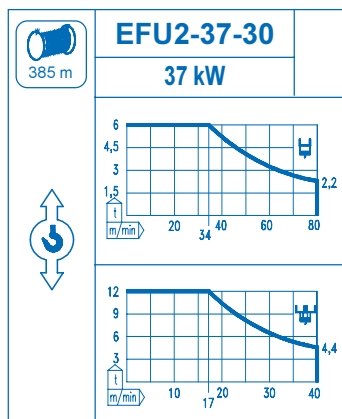
R. máx.	Fuera de servicio Out of service Hors service Ausser Betrieb	5XR43 135,0 t
		9CR63 143,0 t

CFU-7.5
7,5 kW
0 ⇄ 94 m/min

GR-12
4 x 120 Nm
0 ⇄ 0,7 rpm

TRA-7.5
2 x 75 Nm
0 ⇄ 20 m/min

TRA-7.5VC
2 x 75 Nm
0 ⇄ 20 m/min *



Tensión de alimentación Operating voltage Tension de service Betriebsspannung	400 V 3 ph 50 Hz
--	---

Opcional Optional En option Kaufoption	*
---	---