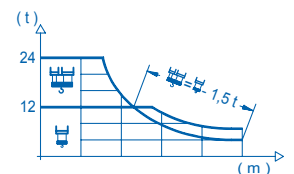
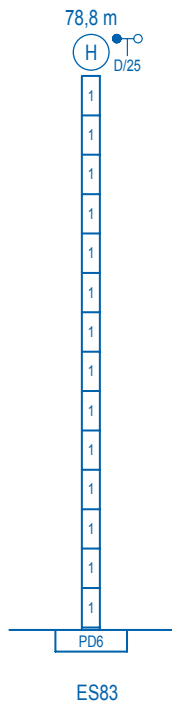
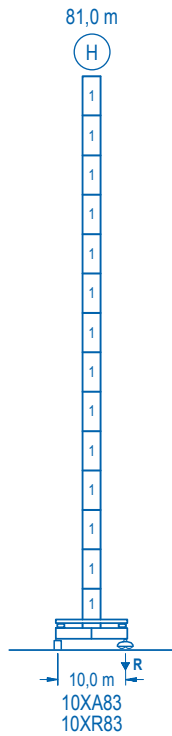


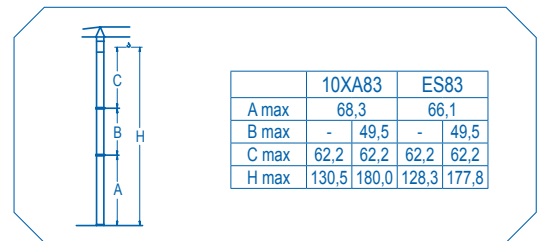
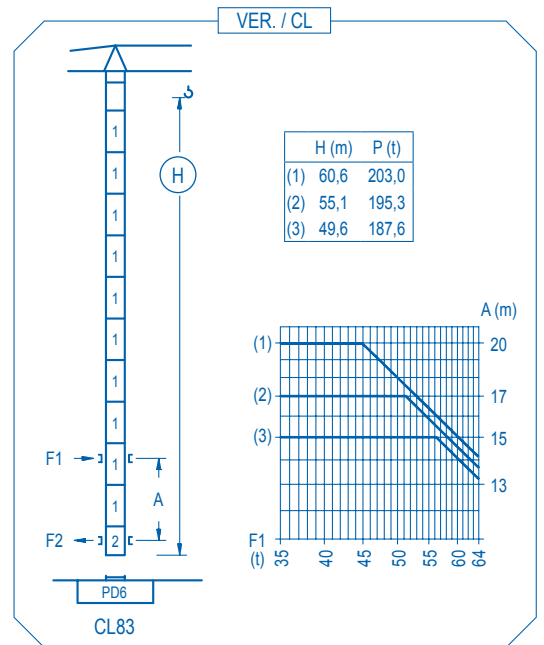
CE EN 14439 (C/25)

| R (m) | 26,4 | 28 | 30 | 32 | 34 | 36 | 38 | 40 | 46,0 | 50,7 | 55 | 60 | 65 | 70 | 75 | 80 | m |
|-------|-------|-------|-------|-------|-------|-------|-------|-------|-------|-------|-------|-------|-------|-------|------|------|----|
| 80 | 24000 | 22300 | 20510 | 18960 | 17590 | 16390 | 15310 | 14350 | 12000 | 12000 | 10930 | 9870 | 8980 | 8230 | 7570 | 7000 | kg |
| 75 | 24000 | 22860 | 21030 | 19440 | 18040 | 16810 | 15710 | 14730 | 12000 | 12000 | 11240 | 10160 | 9250 | 8470 | 7800 | 7500 | kg |
| 70 | | 24000 | 22210 | 20540 | 19080 | 17790 | 16640 | 15610 | 13440 | 12000 | 12000 | 10780 | 9820 | 9000 | 8200 | 7500 | kg |
| 65 | | | 24000 | 22900 | 21290 | 19870 | 18600 | 17470 | 15090 | 13210 | 12000 | 12000 | 11000 | 10000 | 9200 | 8500 | kg |
| 60 | | | | 24000 | 22200 | 20810 | 19560 | 16950 | 14870 | 13180 | 12000 | 12000 | 11000 | 10000 | 9200 | 8500 | kg |
| 55 | | | | | 24000 | 23060 | 21690 | 18830 | 16560 | 15000 | 12000 | 12000 | 11000 | 10000 | 9200 | 8500 | kg |
| 50 | | | | | | 24000 | 23170 | 21800 | 18930 | 17000 | 12000 | 12000 | 11000 | 10000 | 9200 | 8500 | kg |
| 45 | | | | | | | 24000 | 22980 | 21620 | 19200 | 12000 | 12000 | 11000 | 10000 | 9200 | 8500 | kg |
| 40 | | | | | | | | 24000 | 22790 | 22000 | 12000 | 12000 | 11000 | 10000 | 9200 | 8500 | kg |





| nº | Ref. | h (m) | h (m) |
|----|-------|-------|-------|
| 1 | D36 | 2,5 | 5,5 |
| 2 | CLD36 | 2,5 | 3,8 |



| | | |
|----------------|---|-------------------|
| R. máx. | En servicio In operation En service In Betrieb | 10XA83..... 175 t |
|----------------|---|-------------------|

| | | |
|----------------|---|-------------------|
| R. máx. | Fuera de servicio Out of service Hors service Ausser Betrieb | 10XA83..... 185 t |
|----------------|---|-------------------|

CFU-13
13 kW
0 ⇄ 75 m/min

GR-14
4 x 140 Nm
0 ⇄ 0,6 rpm

TRA-10
2 x 100 Nm
0 ⇄ 20 m/min

TRA-10VC
2 x 100 Nm
0 ⇄ 20 m/min

EFU4-110-60
110 kW
1450 m

| | |
|--|------------------------|
| Tensión de alimentación Operating voltage Tension de service Betriebsspannung | 400 V 3 ph 50 Hz |
|--|------------------------|

| | |
|---|---|
| Opcional Optional En option Kaufoption | * |
|---|---|