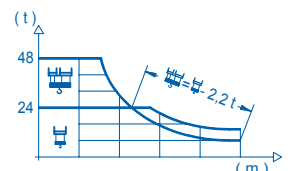
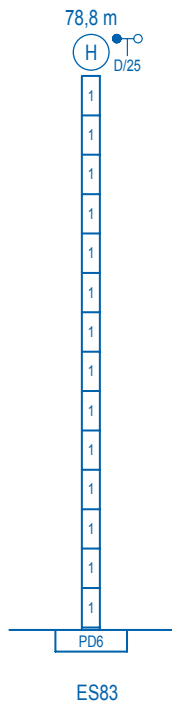
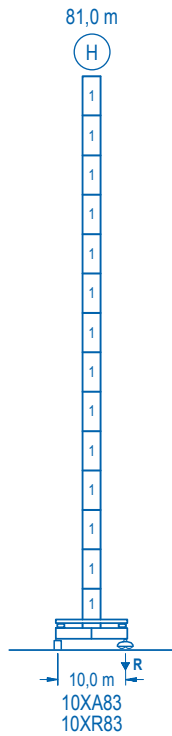


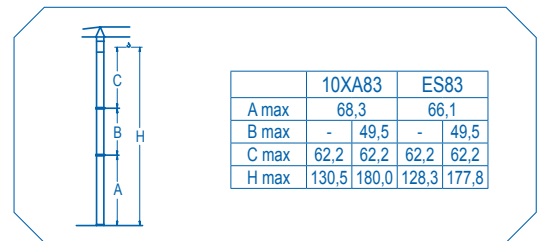
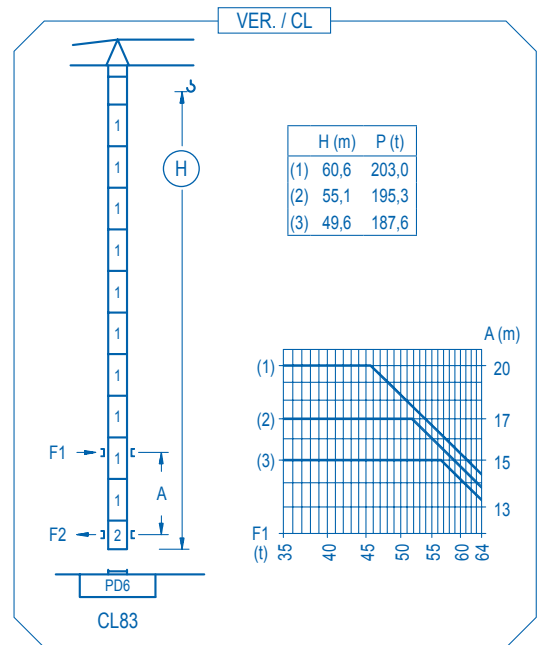
**CE** EN 14439 (C/25)

R (m)																																				
	14,7	17	19	20	22	25,7	27,2	32	35	38	40	45	50	55	60	65	70	75	80	m																
80	48000	40030	34930	32790	29140	24000	24000	19890	17920	16290	15340	13340	11760	10470	9410	8510	7740	7080	6500	kg																
75	48000	40910	35700	33520	29800	24000	24000	20420	18410	16730	15760	13720	12100	10780	9680	8760	7980	7300	6500	kg																
70	48000	43020	37570	35290	31390	24000	24000	21590	19480	17710	16690	14540	12830	11440	10300	9330	8500	7300	6500	kg																
65		48000	41620	39120	34850	29810	24000	24000	21700	19750	18620	16250	14370	12840	11570	10500	9300	8500	7300	kg																
60			48000	43420	38740	33200	27700	24000	24000	22050	20800	18180	16090	14400	13000	11500	10500	9300	8500	kg																
55				48000	42680	36640	30640	27170	24000	24000	23020	20140	17860	16000	14000	12500	11000	10000	9000	kg																
50					48000	42840	36780	30760	27280	24000	24000	23200	20300	18000	16000	14000	12500	11000	10000	kg																
45						48000	42440	36430	30460	27010	24000	24000	23080	20200	18000	16000	14000	12500	11000	kg																
40							48000	42070	36110	30180	26760	24000	24000	23000	20000	18000	16000	14000	12500	kg																





n°	Ref.	∅ (m)	h (m)
1	D36	2,5	5,5
2	CLD36	2,5	3,8



<b>R. máx.</b>	En servicio In operation En service In Betrieb	10XA83..... 177 t
----------------	---	-------------------

<b>R. máx.</b>	Fuera de servicio Out of service Hors service Ausser Betrieb	10XA83..... 185 t
----------------	---	-------------------

**CFU-13**

**13 kW**

0 ⇄ 75 m/min

**GR-14**

**4 x 140 Nm**

0 ⇄ 0,6 rpm

**TRA-10**

**2 x 100 Nm**

0 ⇄ 20 m/min

**TRA-10VC**

**2 x 100 Nm**

0 ⇄ 20 m/min

**EFU4-110-60**

**110 kW**

1450 m

Tensión de alimentación Operating voltage Tension de service Betriebsspannung	<b>400 V</b> <b>3 ph</b> <b>50 Hz</b>
--	---

Opcional Optional En option Kaufoption	<b>*</b>
---	----------