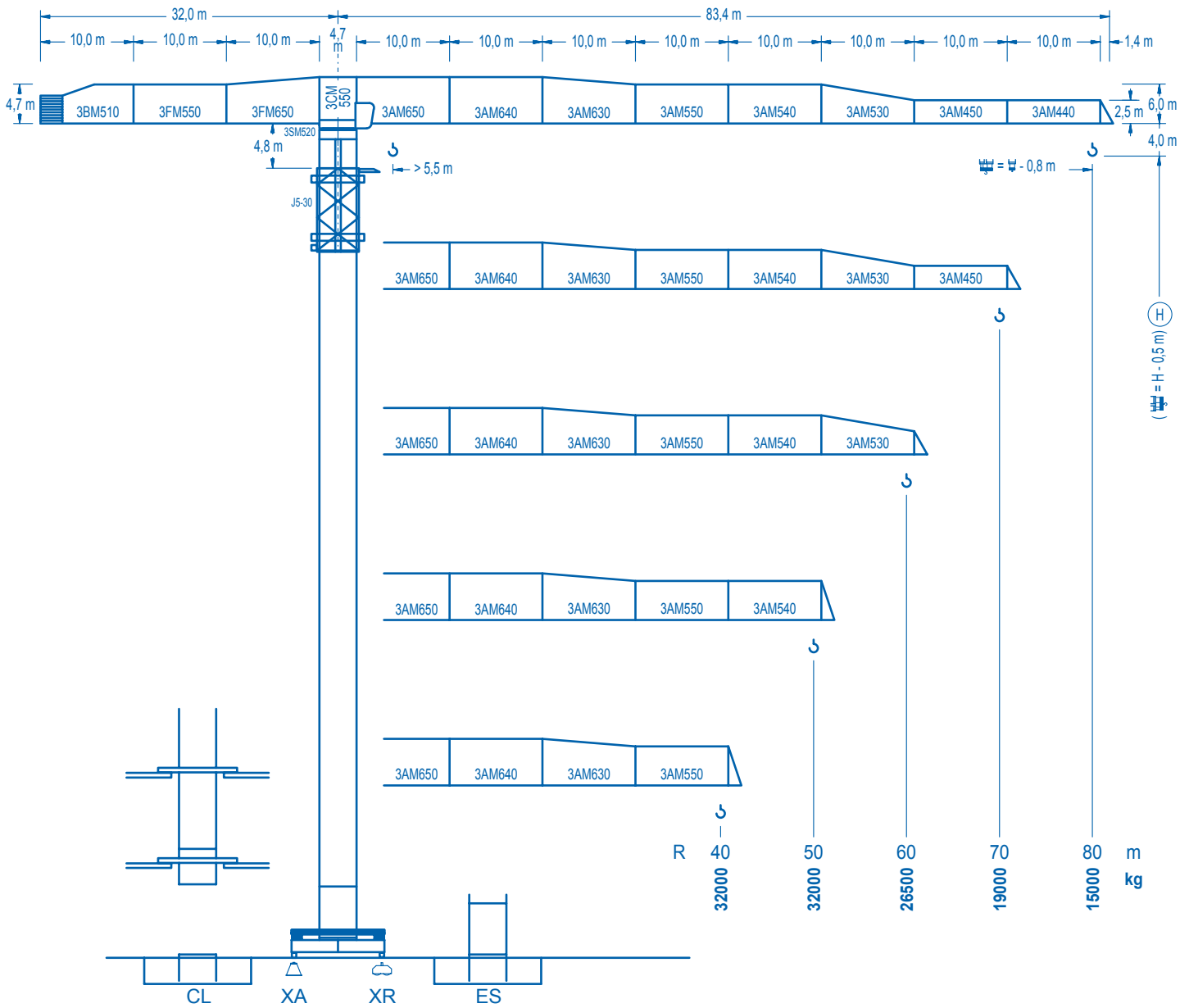


LC 3000

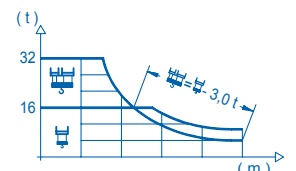
30 LC 1450

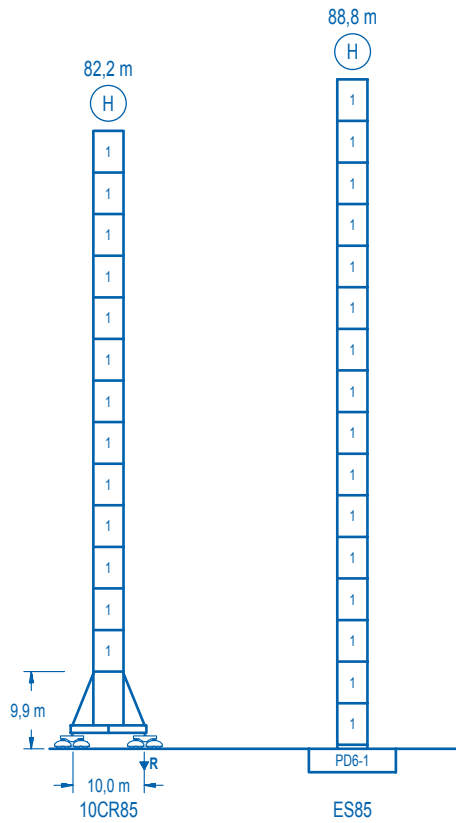
32 t



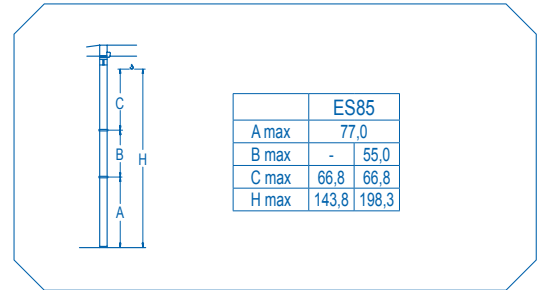
CE EN 14439 (C/25)

R (m)																																									
80	38,6	42	44	46	48	50	52	54	56	58	60	62	64	66	67,7	75,6	76	78	80	m	32000	28905	27330	25905	24600	23405	22300	21285	20345	19475	18660	17900	17190	16525	16000	16000	15910	15440	15000	kg	
70		45,0	46	48	50	52	54	56	58	60	62	64	66	68	70						m	32000	31180	29645	28240	26945	25750	24645	23620	22665	21770	20935	20155	19420	19000						kg
60					50,5	52	54	56	58	60											m	32000	30905	29560	28315	27155	26500														kg
50						50															m	32000																			kg
40	40																				m	32000																			kg





nº	Ref.	□	h
1	D56	4,0	5,5



R. máx.	En servicio In operation En service In Betrieb	10CR85 270 t	R. máx.	Fuera de servicio Out of service Hors service Ausser Betrieb	10CR85 322 t
----------------	---	--------------------	----------------	---	--------------------

Para otras zonas de viento o alturas superiores consultar
 For other wind zones or additional hook heights on request
 Pour d'autres zones de vent ou des hauteurs supplémentaires sur demande
 Für andere Windzonen oder weiteren Hakenhöhen auf Anfrage

	CFU-18
	18 kW
0 ⇄ 60 m/min	

	GFU-15
	4 x 15 kW
0 ⇄ 0,7 rpm	

	TRA-10
	4 x 100 Nm
0 ⇄ 20 m/min	

	TRA-10VC	*
	4 x 100 Nm	
0 ⇄ 20 m/min		

 1450 m 7 Capas 7 Layers 7 Couches 7 Lagen	EFU4L-200-80
	200 kW

Tensión de alimentación Operating voltage Tension de service Betriebsspannung	400 V 3 ph 50 Hz
--	---

Opcional Optional En option Kaufoption	*
---	---